

NOTE: DO NOT DISCARD the Parts List from the Instruction Bulletin. Place the Parts List in the appropriate place in the machine manual for future reference. Retaining the Parts List will make it easier to reorder individual parts and will save the cost of ordering an entire kit.

NOTE: Numbers in parenthesis () are reference numbers for parts listed in Bill of Materials.

Installation instructions for **kit number 9003774**

SYNOPSIS:

This kit contains the parts needed to replace the hopper screen on M20 machines. Please follow step-by-step instructions.

SPECIAL TOOLS / CONSIDERATIONS: NONE

(Estimated time to complete: 1 hour)

PREPARATION:

1. Park the machine on a clean level surface and set the parking brake.
2. Raise the hopper to the middle support position and engage the hopper support pin. Stay clear of the moving hopper. Refer to the Operators Manual for additional instructions and safety information. Refer to Fig. 1.

 **WARNING: Raised hopper may fall. Engage hopper support pin.**

 **WARNING: Lift arm pinch point. Stay clear of hopper lift arms.**

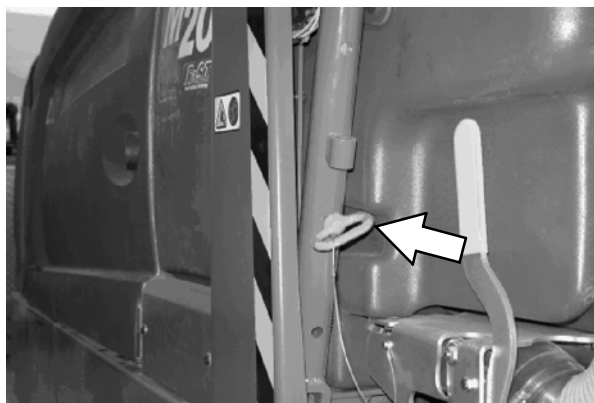


FIG. 1

3. Turn off the machine and remove the key.

FOR SAFETY: Before leaving or servicing machine, stop on level surface, set parking brake, turn off machine, and remove key.

4. Disconnect all hoses and cables from the hopper filter cover and remove the cover and the filter from the hopper. Set the filter and cover aside. Refer to the Operators Manual for additional information.

INSTALLATION:

1. Remove the existing hopper screen from the hopper. Discard the hopper screen. Refer to Fig. 2.
2. Turn the hopper screen retainers so they are pointed away from where the new hopper screen (1) will be installed.
3. Place the new hopper screen (1) into the hopper and center the screen between the two hopper screen retainers and up against the rear of the hopper.
4. Position the retainer angle (5) on the hopper screen (1) and against the rear of the hopper. Mark the location of the hole in the retainer angle on the hopper. Refer to Fig. 3 and Fig. 4.
5. Drill a 3/8" hole through the rear of the hopper where the mark was made in the previous step. Refer to Fig. 3 and Fig. 4.

6. Use a hex screw (2), two steel flat washers (3), a rubber washer (4), and a hex nut (6) to mount the retainer angle (5) onto the hopper. Refer to Fig. 3.
7. Center the hopper screen (1) between the two filter screen retainers, up against the rear of the hopper and use the front hopper screen retainer and the retaining (5) angle to secure the hopper screen into the hopper. Refer to Fig. 3.
8. Attach the squeegee vacuum hose to the hopper screen (1).
9. Insert the filter into the hopper and reinstall the hopper cover onto the hopper. Reconnect all hoses and cables to the hopper cover. Refer to the Operators Manual for additional information.
10. Start the machine, lower the hopper, and test the machine.

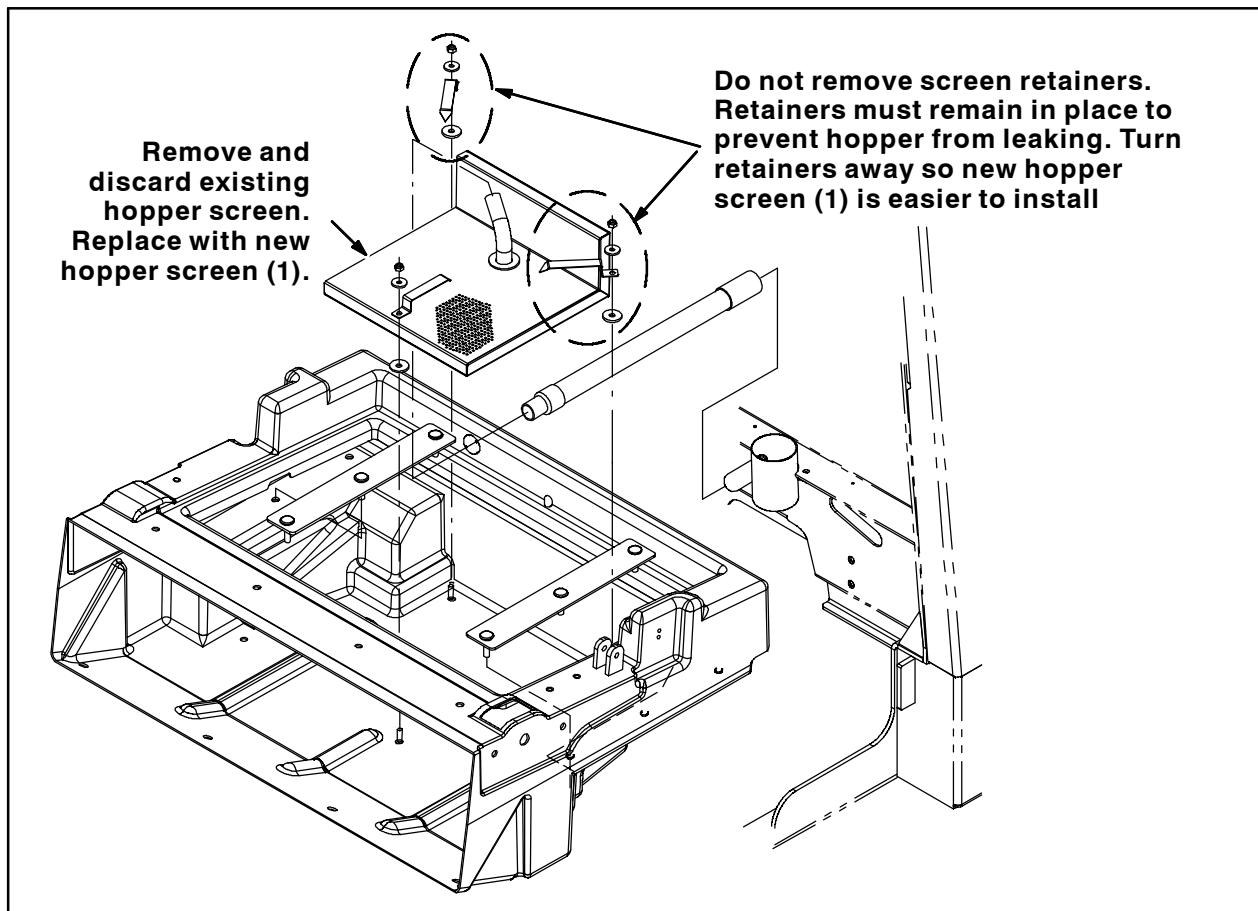


FIG. 2

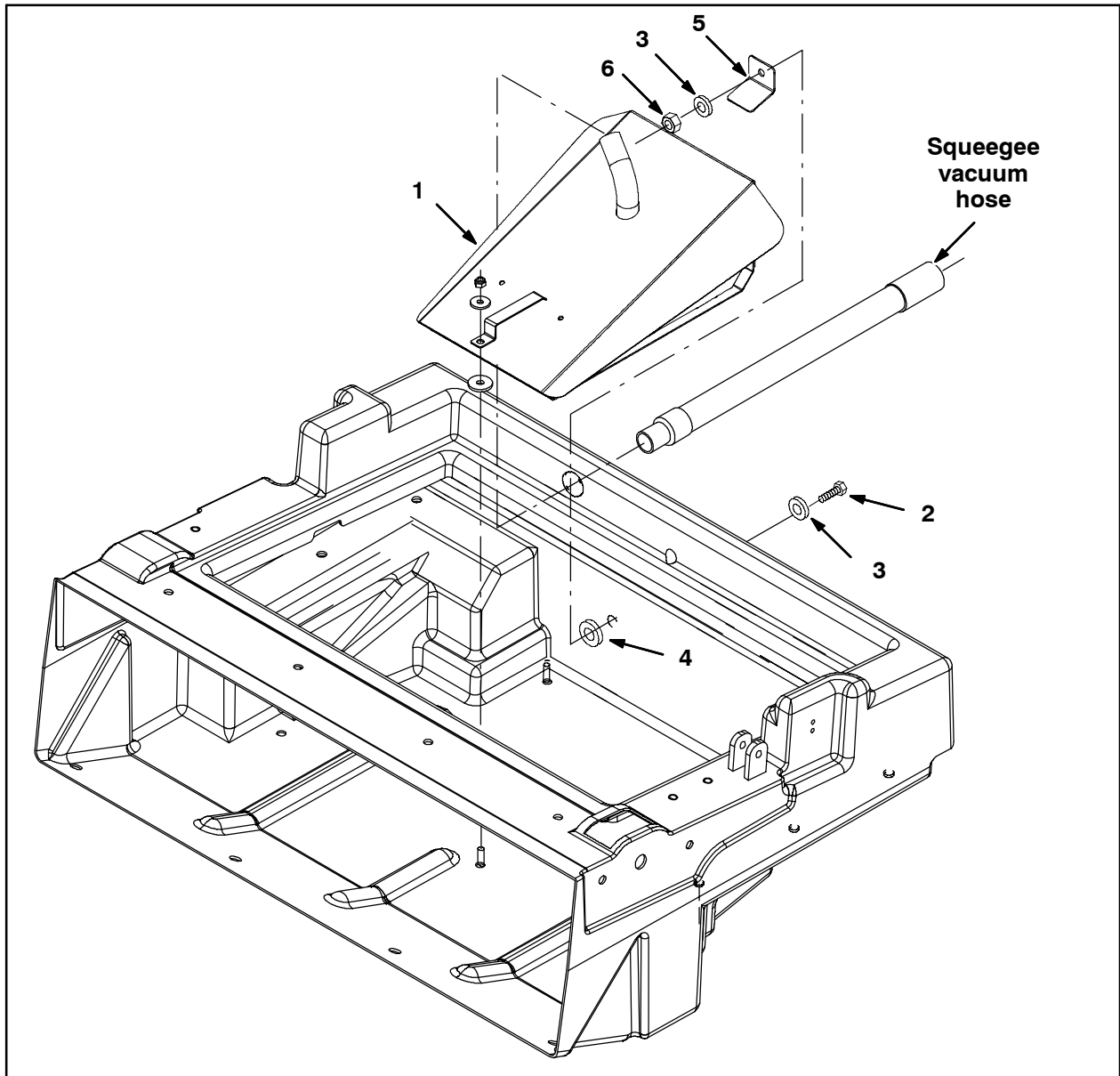


FIG. 3

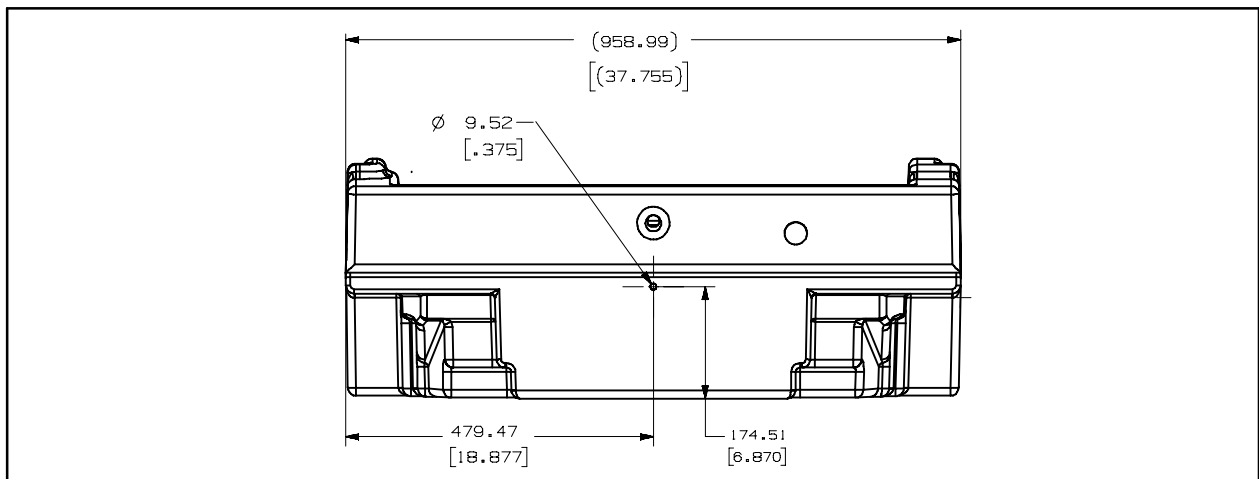


FIG. 4

Bill of Materials for Screen Kit, Replmt, Hopper [M20]-9003774

	Ref.	Tennant Part No.	Description	Qty.
▽		9003774	Screen Kit, Replmt, Hopper [M20]	1
▲	1	1039163	Screen Wldt, Hppr	1
▲	2	09010	Screw, Hex, M8 X 1.25 X 25, SS	1
▲	3	1017218	Washer, Flat, 0.32B 1.00D .12, SS	2
▲	4	222268	Washer, Flat, 0.38B 1.25D .12, Neo	1
▲	5	1039215	Angle, Retainer	1
▲	6	08713	Nut, Hex, Lock, M8 X 1.25, NL, SS	1

TENNANT COMPANY
P. O. Box 1452
Minneapolis, MN 55440-1452